

LinRace System Type F - Blocks with flange

Part Number	Assembled Dimensions (mm)				Block Dimensions (mm)							Rail Dimensions (mm)			
	H	W	W2	E	L	B x J	MQ	L1	Oil Hole	T1	N	W1	H1	F	d x D x h
LR-15F	24	47	16	4.6	66	38 x 30	M5 x 8	40	3	4.3	5	15	14	60	4.5 x 7.5 x 5.3
LR-20F	30	63	21.5	5	77.8	53 x 40	M6 x 9	48.8	M6 x 1	5	6.5	20	18	60	6 x 9.5 x 8.5
LR-20FL					92.4			63.4							
LR-25F	36	70	23.5	7	88	57 x 45	M8 x 12	57	M6 x 1	5	6.5	23	22	60	7 x 11 x 9
LR-25FL					110.1			79.1							
LR-30F	42	90	31	9	109	72 x 52	M10 x 12	72	M6 x 1	7	6.5	28	26	80	9 x 14 x 12
LR-30FL					131.3			94.3							
LR-35F	48	100	33	9.5	119	82 x 62	M10 x 13	80	M6 x 1	8	6.5	34	29	80	9 x 14 x 12
LR-35FL					144.8			105.8							
LR-45F	60	120	37.5	14	148.2	100 x 80	M12 x 15	105	M8 x 1	10	13	45	38	105	14 x 20 x 17
LR-45FL					173			129.8							
LR-55F	70	140	43.5	15	170	116 x 95	M14 x 20	121	M8 x 1	11	13	53	44	105	16 x 23 x 20
LR-55FL					205.1			156.1							

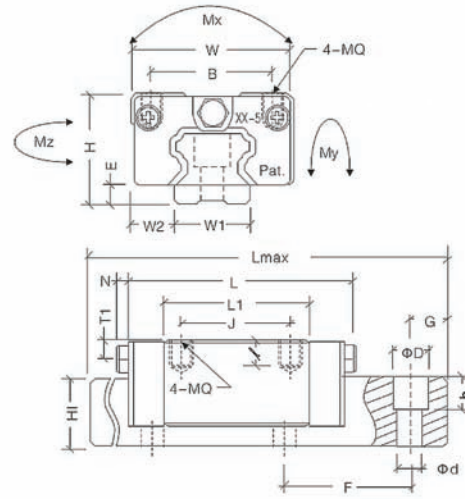
Part Number	(mm)		Basic Load Rating		Static Moment			Weight	
	L max	G*	Dynamic C (kN)	Static Co (kN)	Mx	My	Mz	Block (kg)	Rail (kg/m)
LR-15F	4000	20	8.33	16.18	0.09	0.08	0.08	0.19	1.4
LR-20F	4000	20	14.22	25.10	0.22	0.18	0.18	0.4	2.6
LR-20FL			18.63	32.66	0.28	0.23	0.23	0.52	
LR-25F	4000	20	20.99	39.23	0.35	0.31	0.30	0.57	3.6
LR-25FL			29.38	54.92	0.49	0.44	0.42	0.72	
LR-30F	4000	20	29.22	53.84	0.59	0.49	0.48	1.1	5.2
LR-30FL			38.25	70.51	0.77	0.64	0.64	1.4	
LR-35F	4000	20	38.83	68.74	0.94	0.73	0.71	1.6	7.2
LR-35FL			51.29	90.91	1.22	0.93	0.93	2	
LR-45F	4000	22.5	66.10	118.66	2.12	1.67	1.65	2.7	12.3
LR-45FL			81.69	146.61	2.62	2.01	2.01	3.6	
LR-55F	4000	30	97.48	167.70	3.60	2.87	2.82	5	16.9
LR-55FL			125.72	216.33	4.63	3.73	3.67	6.4	

HOW TO ORDER:

Blocks - Part Number Example: LR-15F
 LR = LinRace System; 15 = size
 F = Block with flange, (standard); FL = Longer Block with flange
 Light preload (standard)

Rails - Part Number Example: LR-15R-500
 LR = LinRace System; 15R = size
 500 = Length of rail - up to 4000mm, chargeable in 500mm increments
 - Please state exact length required as there is a 5mm cutting wastage
 G* = Standard distance to first mounting hole - please state dimension if requirement is different

All dimensions are subject to change without notice.



LinRace System

Type S - Blocks without flange

Part Number	Assembled Dimensions (mm)				Block Dimensions (mm)							Rail Dimensions (mm)			
	H	W	W2	E	L	B x J	MQ	L1	Oil Hole	T1	N	W1	H1	F	d x D x h
LR-15S	28	34	9.5	4.6	66	26 x 26	M4 x 6.4	40	3	8.3	5	15	14	60	4.5 x 7.5 x 5.3
LR-20S	30	44	12	5	77.8	32 x 36	M5 x 8	48.8	M6 x 1	7	6.5	20	18	60	6 x 9.5 x 8.5
LR-20SL					92.4	32 x 50		63.4							
LR-25S	40	48	12.5	7	88	35 x 35	M6 x 9.6	57	M6 x 1	11.8	6.5	23	22	60	7 x 11 x 9
LR-25SL					110.1	35 x 50		79.1							
LR-30S	45	60	16	9	109	40 x 40	M8 x 12.8	72	M6 x 1	10	6.5	28	26	80	9 x 14 x 12
LR-30SL					131.3	40 x 60		94.3							
LR-35S	55	70	18	9.5	119	50 x 55	M8 x 12.8	80	M6 x 1	15	6.5	34	29	80	9 x 14 x 12
LR-35SL					144.8	50 x 72		105.8							
LR-45S	70	86	20.5	14	148.2	60 x 60	M10 x 16	105	M8 x 1	18	13	45	38	105	14 x 20 x 17
LR-45SL					173	60 x 80		129.8							
LR-55S	80	100	23.5	15	170	75 x 75	M12 x 19	121	M8 x 1	20	13	53	44	105	16 x 23 x 20
LR-55SL					205.1	75 x 95		156.1							

Part Number	(mm)		Basic Load Rating		Static Moment			Weight	
	L max	G*	Dynamic	Static	Mx	My	Mz	Block (kg)	Rail (kg/m)
			C (kN)	Co (kN)					
LR-15S	4000	20	8.33	16.18	0.09	0.08	0.08	0.21	1.4
LR-20S	4000	20	14.22	25.10	0.22	0.18	0.18	0.31	2.6
LR-20SL			18.63	32.66	0.28	0.23	0.23		
LR-25S	4000	20	20.99	39.23	0.35	0.30	0.30	0.45	3.6
LR-25SL			29.38	54.92	0.49	0.42	0.42		
LR-30S	4000	20	29.22	53.84	0.59	0.48	0.48	0.91	5.2
LR-30SL			38.25	70.51	0.77	0.64	0.64		
LR-35S	4000	20	38.83	68.74	0.94	0.71	0.71	1.5	7.2
LR-35SL			51.29	90.91	1.22	0.93	0.93		
LR-45S	4000	22.5	66.10	118.66	2.12	1.65	1.65	2.3	12.3
LR-45SL			81.69	146.61	2.62	2.01	2.01		
LR-55S	4000	30	97.48	167.70	3.60	2.82	2.82	3.9	16.9
LR-55SL			125.72	216.33	4.63	3.67	3.67		

HOW TO ORDER:

Blocks - Part Number Example: LR-15S

LR = LinRace System; 15 = size

S = Block without flange (standard); SL = Longer Block without flange

Light Preload (standard)

Rails - Part Number Example: LR-15R-500

LR = LinRace System; 15R = size

500 = Length of rail - up to 4000mm, chargeable in 500mm increments

- Please state exact length required as there is a 5mm cutting wastage

G* = Standard distance to first mounting hole - please state dimension if requirement is different

All dimensions are subject to change without notice.